

Disconnecting Downspouts

The More You Know,
The Better The Flow.



If downspouts are connected to the sanitary sewer—or wastewater—system, they carry rainwater into the system, taking up space needed for sewage. This excess water in the system can cause sewage backups and overflows. Follow Piper's steps below to disconnect downspouts, and help prevent the risk of sewer backups and overflows.

Tools and materials needed: saw, water-tight mechanical plug, trowel, bucket, concrete mix, gutter elbows and/or corrugated pipe, gutter support brackets, power drill, splash block or rain barrel (optional). Be sure to always use proper safety equipment.



1. Saw the downspout at a height that will allow for adding a gutter elbow and/or inserting corrugated pipe to direct the water away from the foundation.



2. Remove the cut-off section of the downspout from the boot.



3. Insert a water-tight mechanical plug into the boot. Plugs are available at hardware and home improvement stores.



4. Seal the plug with concrete.



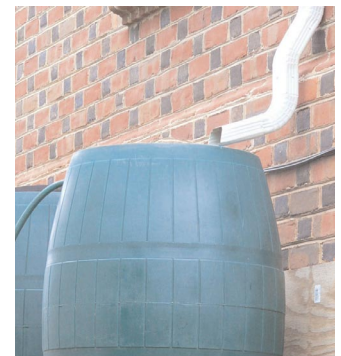
5. Insert a gutter elbow and/or corrugated pipe to direct water away from the foundation.



6. Drill holes for gutter support brackets to secure the elbow.



7. A splash block placed under the gutter elbow will help direct water away from the foundation. Adding corrugated pipe to the elbow will direct water further away from the foundation.



8. Water can also be directed into rain barrels. Use the water for outdoor uses. Conserve water and save money on water and sewer bills at the same time.